

# **Motor Mounts**

## **TABLE OF CONTENTS**

**FORD**

**FREIGHTLINER**

**INTERNATIONAL**

**KENWORTH**

**MACK**

**PETERBILT**

**VOLVO**

**WESTERN STAR**

*SUPPLIERS inc*

*ATRO*

*AUTOMANN*

*ENERGY SUSPENSION*

*GAFF*

*NEWSTAR*

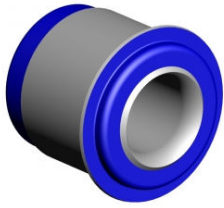
*POWERDOWN*



**Rocklea  
Truck Spares**

113 Boniface street, Archerfield, Qld, 4108  
Phone: (07) 3277 0966

# FORD



Motor Mount - # **PL1048**(poly)  
 Length 3 1/8"  
 ID: 1 9/16"  
 Small OD 3"  
 Large OD 3 7/16"  
 Fits Ford, International & Western Star  
 Alt # G10075, 36.1001R



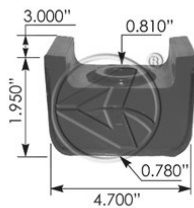
Motor Mount - # **M20304** (rubber)  
 Length 3 1/8"  
 ID: 1 9/16"  
 Small OD 3"  
 Large OD 3 7/16"  
 Fits Ford, International & Western Star  
 Alt # 503579C1, NV4, LN6068AA



Motor Mount - # **EM2**  
 Two piece poly, red bottom/yellow top



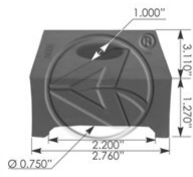
Engine Mount - # **M203023**(rubber)  
 Thickness 1 1/8"  
 Width 2 5/16"  
 Length 8 1/8"  
 Bolt Hole A 9/16", Bolt Hole B 3/4"



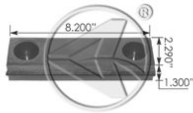
Motor Mount - # **M203027**(rubber)  
 Thickness 3"  
 Width 1.95"  
 Length 4.7"  
 Bolt Hole .81" to .78"



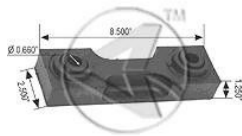
Motor Mount - # **M203028**(rubber)  
 Thickness 2.75"  
 Width 3.5"  
 Length 6.5"



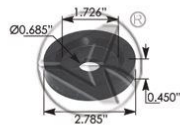
Motor Mount - # **M203029**(rubber)  
 Thickness 1.27"  
 Width 3.11"  
 Length 2.76"  
 Bolt Hole 1" to .75"



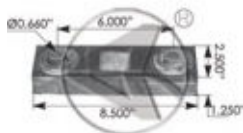
Motor Mount - # **M203031**(rubber)  
 Thickness 1.3"  
 Width 2.29"  
 Length 8.2"  
 Alt # 6038AA(poly), G18694(poly)



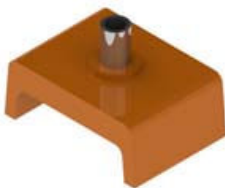
Front Engine Mount, Upper/Lower # **M203032**(rubber)  
 Thickness 1.25"  
 Width 2.5"  
 Length 6.125" c-c



Insulator - # **M203083**  
 Large OD 2.785"  
 Small OD 1.726"  
 ID .685"  
 Thickness .45"



Insulator - # **M203095**  
 Thickness 1.25"  
 Width 2.5"  
 Length 8.5", c-c 6"  
 Bolt Hole .66"



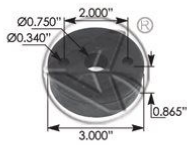
Cab Mount - # **G10501**  
 ID 1/2"  
 Thickness 1 11/16"  
 Width 3 1/8"  
 Length 4 3/8"



Rear Gearbox Mount - # **PDFLRB**  
 OD 34mm  
 ID 13mm  
 Width 32mm



Front Cab Isolation Mount - # **PDFLRB**



Gearbox Mount - # **GD1HZE373A**

OD 3"

ID .75"

Thickness .865"

Hole size .34", c-c 2"



Motor Mount Kit (Front) - # **MM46-62002**

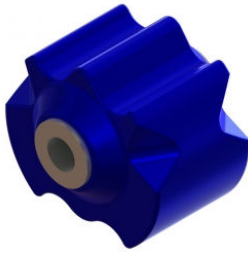
ID 3/4"

Misc. Bolt Hole 4" c-c

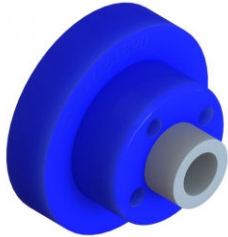
Kit Components – (1) MM46-62651 Upper Mount, (1) MM46-62451 Lower Mount

Alt # G11074, (M17403/M17413)(rubber)

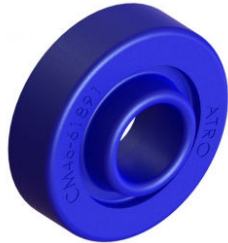
# **FREIGHTLINER**



Cab Mount Bushing # **CM46-61769**  
Length 3 1/8"  
ID 5/8"  
OD 3 5/8"  
2 per Suspension  
Installation Tool # PT46-59002, G11079  
Alt # G11075, M17423



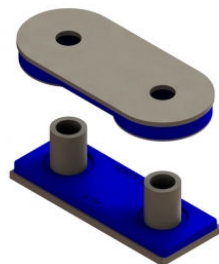
Cab Mount, Upper # **CM46-61890**  
Length 2.6"  
Bolt Hole 3/4"  
OD 3.8"  
2 per Suspension  
Alt # M17337, S20565(rubber)  
Alt Kit # **G11093**



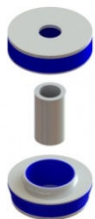
Cab Mount, Lower # **CM46-61891**  
Length 1.35"  
ID 1.25"  
OD 3.8"  
2 per Suspension  
Alt # M17335(rubber)  
Alt Kit # **G11093**



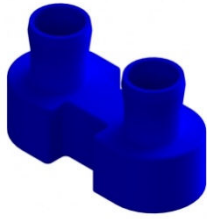
Motor Mount Kit (Rear) - # **MM46-62001**  
ID 3/4"  
Kit Components – (1) Upper Mount, (1) Lower Mount  
Alt Kit # **G11077, (M17395/M17401),(M17396/M17401)(rubber)**



Motor Mount Kit (Front) - # **MM46-62002**  
ID 3/4"  
Misc. Bolt Hole 4" c-c  
Kit Components – (1) MM46-62651 Upper Mount, (1) MM46-62451 Lower Mount  
Alt # G11074, (M17403/M17413)(rubber)  
Suits Ford, Freightliner, Western Star



Motor Mount Kit (Front) - # **MM46-62003**  
Kit Components – (1) Upper Mount, (1) Lower Mount, (1) Spacer Sleeve  
Alt # G11018, M17343(rubber)



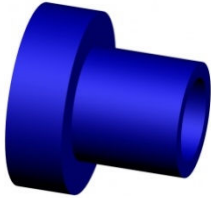
Motor Mount Kit (Front) - # **MM46-62416**

Misc. Bolt: 5/8"; Bolt Holes 3" c-c

Kit Components – (1) MM46-62651 Upper Mount, (1) MM46-62451 Lower Mount

Alt # G11065, M17437(rubber)

Fits Freightliner & Sterling



Motor Mount Kit (Front) - # **PL1003**

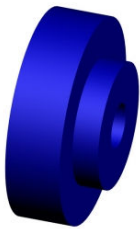
Length 2 1/8"

ID 5/8"

Small OD 1 1/2"

Large OD 2 3/8"

Alt # G11725, M17330(rubber)



Radiator/Motor Mount - # **PL1015**

Length 1 3/16"

ID 5/8"

Small OD 1 13/16"

Large OD 3"

Alt # PD3401, K066.228(rubber)

Fits Western Star, Kenworth & Freightliner



Hood Mount - # **PL1051**

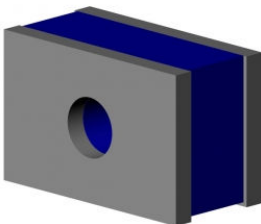
Length 2 15/16"

ID 9/16"

Small OD 1 1/8"

Large OD 4"

Alt # S13329, M17331(rubber)



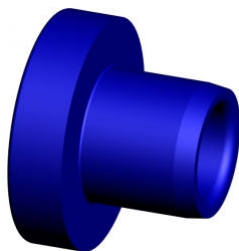
Motor Mount - # **PL1052**

Length 2 13/16"

ID 3/4"

Height 1 3/8"

Width 1 13/16"



Motor Mount - # **PL1105**

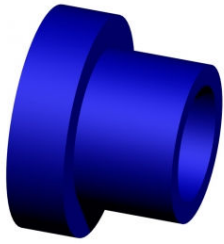
Length 2 1/8"

ID 13/16"

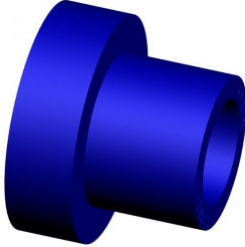
Small OD 1 5/8"

Large OD 2 13/16"

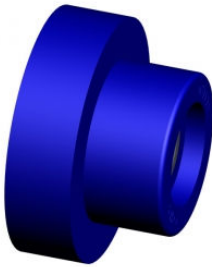
Alt # G11707



Motor Mount - # **PL1107**  
 Length 2 1/4"  
 ID 9/16"  
 Small OD 1 1/4"  
 Large OD 2 3/4"  
 Fits Freightliner & Mack



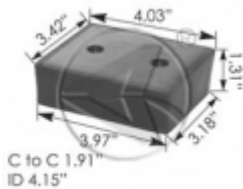
Cab Mount - # **PL1168**  
 Length 1 5/8"  
 ID 1/2"  
 Small OD 1 3/8"  
 Large OD 2"  
 Alt # M11224(rubber)



Cab Mount - # **PL1170**  
 Length 1 13/16"  
 ID 11/16"  
 Small OD 2"  
 Large OD 3"



Mount - # **11211**  
 Length 1.25"  
 ID .5"  
 Small OD 1.25"  
 Large OD 1.75"



Motor Mount - # **M17329**  
 Length 4.03" to 3.97"  
 Height 1.31"  
 Width 3.42" to 3.18"  
 Fits Freightliner, IHC



Upper Cab Mount - # **M17334**  
 Length 1.07"  
 ID .778"  
 Small OD 1.85"  
 Large OD 3.25"  
 Alt # S19334, LORSSB3310018



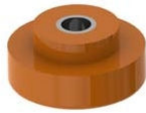
Radiator Mount - # **M17341**



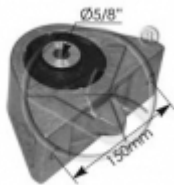
Upper (only) Engine Mount - # **M17349**  
 Length 2.05"  
 ID 1"  
 Small OD 1.03"  
 Large OD 4"



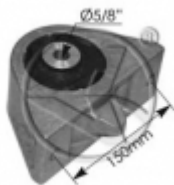
Lower (only) Engine Mount - # **M17351**  
 Length .89"  
 ID 1"  
 Small OD 1.96"  
 Large OD 3.26"



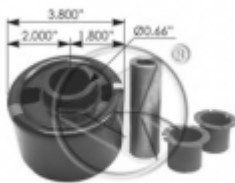
Radiator Mount - # **M17412**  
 Length 1.2"  
 ID .625"  
 Small OD 1.89"  
 Large OD 3.02"  
 Alt # PL1015, PD3401  
 Fits Freightliner, Kenworth, Peterbilt as Upper + Western Star as Lower Radiator Mount



Cabin Mount I Version - # **M17419**  
 ID 5/8"  
 C to C 150mm



Cabin Mount II Version - # **M17420**  
 ID 5/8"  
 C to C 150mm  
 With 3 1/8" insert

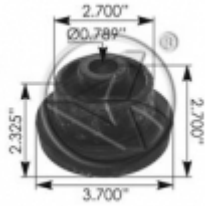


Cabin Mount - # **M17421**  
 ID .66"  
 OD 3.8"  
 Hole Offset 2" to 1.8"  
 With 3.5" insert



Isolator Mount - # **M17422**  
 ID .625"  
 OD 3.76"  
 Sleeve Length 2.53"  
 Overall Length 3.56"





Upper Motor Mount - # **M46212**  
 ID .789"  
 Large OD 3.7"  
 Small OD 2.7"  
 Width 2.7"



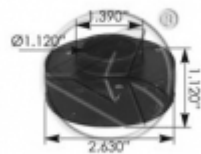
Upper Motor Mount Kit - # **M46212K**  
 Kit consists for (1) WA64 Washer, (1) M203045 Cabin Mount & (1) MK46212 Upper Motor Mount  
 Alt # G11113



Cabin Mount - # **M203045**  
 ID1 2.7"  
 ID2 1.34"  
 OD 4"  
 Thickness .9"



Radiator Mount - # **M203055**  
 Alt # S20673



Cabin Mount - # **M304970**  
 ID 1.12"  
 Small OD 1.12"  
 Large OD 2.63"  
 Thickness .1.12"



Transmission Bushing - # **G11115**  
 OD 1 1/16"  
 ID 3/8"  
 Length 1"

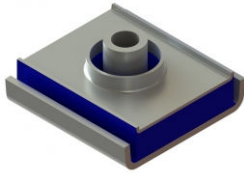


Clutch Rod Bushing - # **G11118**  
 OD 1 1/16"  
 ID 1/2"  
 Length 1"

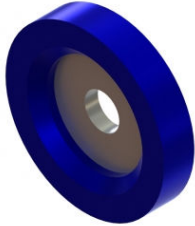


Leaf Spring Bushing - # **GS15348**

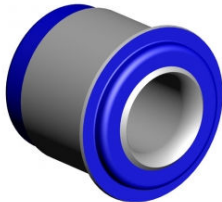
# INTERNATIONAL



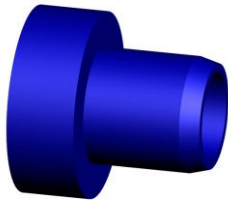
Motor Mount, Lower (Front) - # **MM55-624C3**  
Length 4"  
ID 5/8"  
Width 4 1/16"  
Alt # SD905(rubber)  
Alt Kit # G34509(poly)



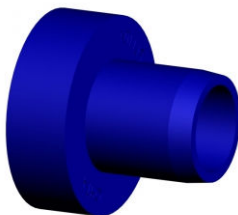
Motor Mount, Upper (Front) - # **MM55-626C2**  
ID 5/8"  
OD 3"  
Thickness 9/16"  
Alt # M17449(rubber)  
Alt Kit # G34509(poly)



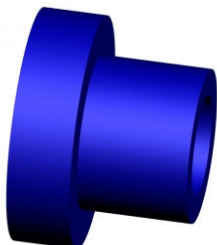
Motor Mount - # **PL1048**  
Length 3 1/8"  
ID: 1 9/16"  
Small OD 3"  
Large OD 3 7/16"  
Fits Ford, International & Western Star  
Alt # EM2, M20304(rubber)



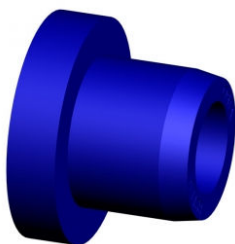
Motor Mount - # **PL1055**  
Length 2 3/8"  
ID: 1 1/16"  
Small OD 1 1/2"  
Large OD 2 3/8"  
Alt # G10503, PDFS.2S, 470031c2(rubber)



Motor Mount - # **PL1104**  
Length 2 5/8"  
ID: 1 1/16"  
Small OD 1 5/8"  
Large OD 2 7/8"  
Alt # G10505, M20309UB(rubber), 479237C1(rubber)



Motor Mount - # **PL1110**  
Length 2 1/4"  
ID: 1 1/16"  
Small OD 2"  
Large OD 3"  
Alt # G10020



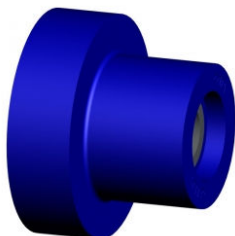
Motor Mount - #**PL1128**

Length 1 3/8"

ID: 9/16"

Small OD 1 3/16"

Large OD 1 13/16"



Motor Mount - #**PL1136**

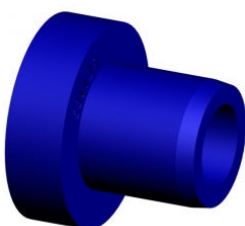
Length 2 1/4"

ID: 11/16"

Small OD 1 15/16"

Large OD 2 15/16"

Alt # 476869C1



Motor Mount - #**PL1183**

Length 2 1/8"

ID: 5/8"

Small OD 1 1/2"

Large OD 2 3/8"



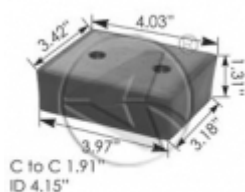
Engine Mount Kit - # **G34500**

Alt Kit #s(rubber) – [(1) M17437, 1 3/4" hole center, or (1) M17438, 2" hole center] + (1) M17449



Engine Mount Kit - # **G34510**

Alt Kit (rubber) – (1) M17437 + (1) M17447



Cab Mount - # **M17329**

Length 3.97" to 4.03"

Width 3.18" to 3.42"

Thickness 1.31"

C to C 1.91"



Cab Mount - # **M203053**

Length 3"

ID 3/4"

OD 3 3/8"

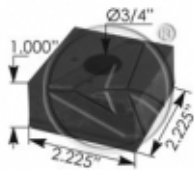
Bolt Holes 5" c-c

Alt # G34515, 3515345C1, CM55-615C2

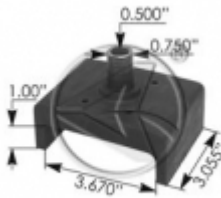


Cab Mount - # **M203053**  
 Height 5"  
 ID .555"  
 Bolt Holes .5", 5" c-c  
 Alt # 1656874C2

S-Line Rear Upper Cab Mount - # **M203059**  
 Length 3.022"  
 Width 2.3"  
 ID .555"



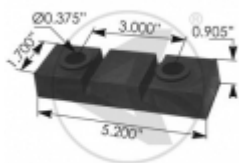
S-Line Rear Lower Cab Mount - # **M203063**  
 Length 2.225"  
 Width 2.225"  
 ID 3/4"  
 Thickness 1"



S-Line Front Upper Cab Mount - # **M203067**  
 Length 3.67"  
 Width 3.055"  
 ID .5"  
 OD .75"  
 Wing Height 1"



Rear Engine Mount - # **3210532R92**

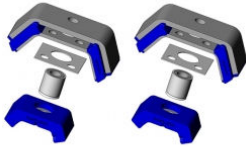


Front Engine Mount - # **M203123**  
 Length 5.2"  
 Width 1.7"  
 Thickness .905"  
 ID .375", c-c 3"

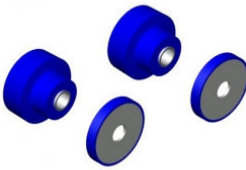


Cab Mount - # **G10009**  
 Thickness 1 15/16"  
 Width 2 3/4"  
 Length 2 13/16"

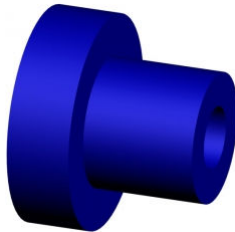
# KENWORTH



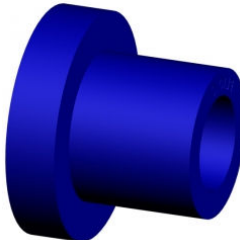
Motor Mount Kit, Rear (set of 2) - # **KT59.62001**  
Kit Components – (2) Upper Mounts, (2) Lower Mounts, (2) Wear Plates, (2) Sleeves  
Alt # G11540



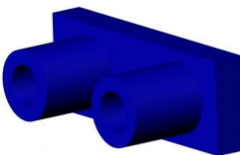
Motor Mount Kit, Front (set of 2) - # **KT59.62002**  
Kit Components – (2) Upper Mounts, (2) Lower Mounts  
ID 13/16"  
Small OD 2"  
Large OD 3 1/4"  
Height 1 3/16"(upper), 1/2"(lower)  
Available for high temp applications (HT)  
Alt kit – # M203039K = (M203039 & M203041)



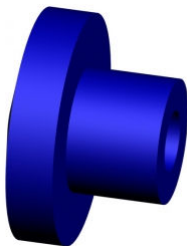
Rear Cab/Motor Mount - # **PL1009**  
Length 2 7/16"  
ID 5/8"  
Small OD 1 13/16"  
Large OD 3"  
Alt# K066.176, M17417



Hood Hinge Bushing - # **PL1010**  
Length 1 3/8"  
ID: 1/2"  
Small OD 1 3/16"  
Large OD 1 13/16"  
Alt# K066.218, M17400(rubber)



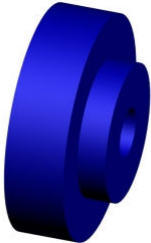
Motor Mount - # **PL1012**  
Length 5 1/2" 3" c-c  
ID 11/16"  
OD 1 1/2"  
Height 2 3/8"  
Width 2"  
Alt# G11539, M17404(rubber)



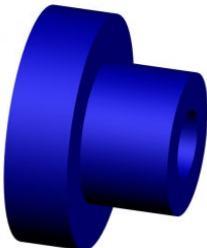
Motor Mount - # **PL1013**  
Length 2 5/8"  
ID 13/16"  
Small OD 1 1/2"  
Large OD 3 3/4"  
Alt# G11613, M17406(rubber), EM12, K066.229



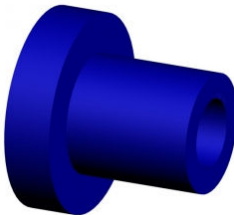
Motor Mount - #**PL1014**  
Length 4 1/2"  
ID 3 1/2"  
Width 2"  
Alt # K174.155, M17408(rubber)



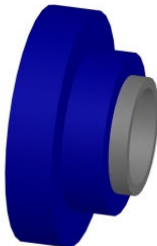
Radiator/Motor Mount - #**PL1015**  
Length 1 3/16"  
ID 5/8"  
Small OD 1 13/16"  
Large OD 3"  
Alt # PD3401, K066.228(rubber)  
Fits Western Star, Kenworth & Freightliner



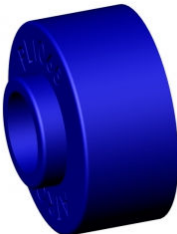
Cab Motor, Rear - #**PL1016**  
Length 1 15/16"  
ID 5/8"  
Small OD 1 13/16"  
Large OD 3"  
Alt # K066.269, M17414(rubber)



Radiator Motor - #**PL1063**  
Length 2 3/16"  
ID 5/8"  
Small OD 1 1/2"  
Large OD 2 1/2"  
Alt # M17410(rubber)



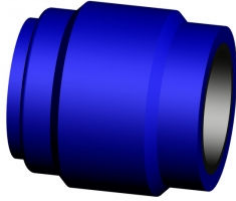
Transmission Motor - #**PL1064**  
Length 1"  
ID 15/16"  
Small OD 1 9/16"  
Large OD 2 1/4"



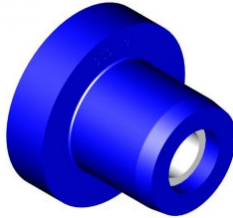
Radiator Mount - #**PL1065**  
Length 15/16"  
ID 5/8"  
Small OD 3/4"  
Large OD 1 5/8"



Transmission Washer - #**PL1066**  
ID 1 1/8"  
OD 2 1/4"  
Thickness 3/8"



Cab Mount - # **PL1068**  
Length 2 1/4"  
ID 1 5/16"  
OD 2 1/8"



Motor Mount - # **PL1070**  
Length 2"  
ID 1 1/2"  
OD 2 1/2"  
Alt # G11707  
Fits Kenworth & Peterbuilt



Top Bonnet Mount - # **K066.462SP**



Bottom Bonnet Mount - # **K066.463SP**



Bonnet Mount - # **K066.464SP**



Bonnet Mount - # **K066.465SP**



Bonnet Insulator - # **K179.499**



Hood Mount - # **HML59.64010**  
Length 3"  
Small Outside Diameter 1"  
Large Outside Diameter 1 1/2"  
Misc. Stud Size 5/16" – 24 x 1 3/4"





Motor Mount - # **G11615**  
 Length 2 1/4"  
 ID 13/16"  
 OD 3 7/16"

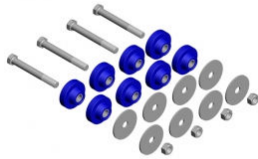


Motor Mount - # **M17425**  
 Thickness .388"  
 ID .8"  
 OD 2 1/2"



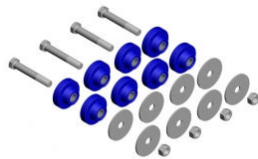
Motor Mount Kit # **M203039K**  
 Kit consists of (1) Front Motor Mount # M203039 + (1) Rebound Washer # M203041

# MACK



## Insulator Kit # **KT62-62216**

Kit consists of (8) PL1017, (8) Washers, (4) Locknuts & (4)  $\frac{3}{4}$ " - 16 x 6  $\frac{1}{2}$ " bolts



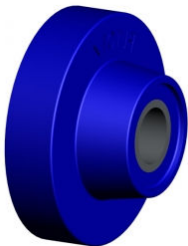
## Insulator Kit # **KT62-62389**

Kit consists of (8) PL1017, (8) Washers, (4) Locknuts & (4)  $\frac{3}{4}$ " - 16 x 5" bolts



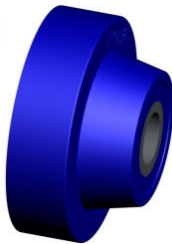
## Motor Mount - # **MM62-62334**

Length 1  $\frac{7}{8}$ "  
Small OD 1  $\frac{5}{16}$ "  
Large OD 1  $\frac{7}{8}$ "  
Bolt Hole  $\frac{5}{8}$ " or 16mm



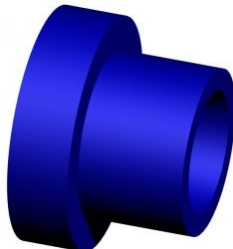
## Cab Mount - # **PL1017**

Length 1  $\frac{1}{2}$ "  
ID  $\frac{3}{4}$ "  
Small OD 1  $\frac{11}{16}$ "  
Large OD 3  $\frac{3}{16}$ "  
Alt # 20QL1118A, EM6, MK10



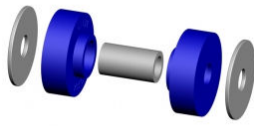
## Motor Mount - # **PL1091**

Length 1  $\frac{15}{16}$ "  
ID  $\frac{7}{8}$ "  
Small OD 2"  
Large OD 3  $\frac{3}{4}$ "  
Alt # 20QL324M, G12023, M2



## Exhaust Mount/Insulator - # **PL1107**

Length 1  $\frac{1}{4}$ "  
ID  $\frac{9}{16}$ "  
Small OD 1  $\frac{1}{4}$ "  
Large OD 1  $\frac{3}{4}$ "



Insulator - # **PL1131**

Length 2 3/16"

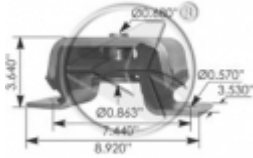
ID 11/16"

Small OD 1 3/8"

Large OD 2 5/8"

Kit components - (2) Mount Bushings, (2) Washers, (1) Inner Sleeve

Alt # 20QL312M2



Rear Engine Mount # **M17528**

Length 8.92"

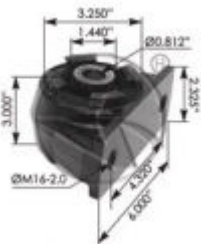
Height 3.64"

Width 3.53"

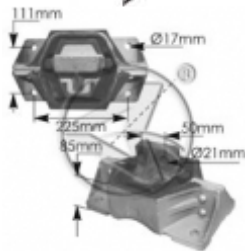
7.44\" c-c, bolt hole .57"

Small ID .68"

Large ID .863"



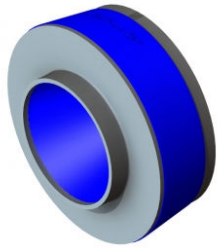
Cab Mount # **M17530**



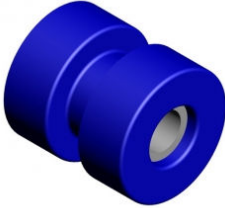
Rear Motor Mount # **M62247**

Alt # 20QL47AM

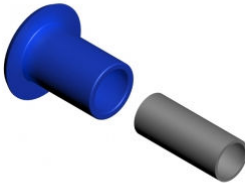
# **PETERBILT**



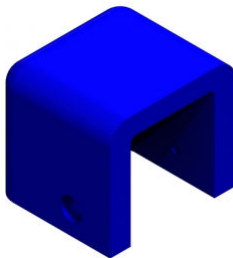
Cab & Sleeper Mount # **CM75-61257**  
Height 1 1/8"  
ID 21/32"  
OD 1 13/16"(nipple)  
Large OD 3"



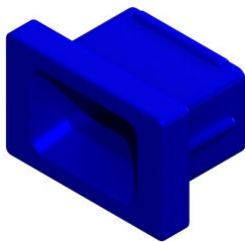
Exhaust Bushing # **EM75-69656**  
Length 1 3/8"  
ID 3/8"  
Small OD 3/4"  
Large OD 1 1/4"  
Alt # M20311, 90.9053, 14.14656



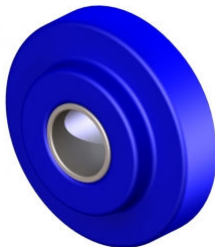
Hood Mount Pivot Bushing # **HM75-64726**  
Length 1 11/16"  
ID 3/4"  
Small OD 1"  
Large OD 1 11/16"  
Misc. Sleeve ID 5/8", Sleeve Length 1 7/8"



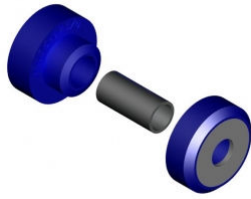
Hood Bumper # **HM75-65114**  
Length 2 3/4" outside, 2" inside  
Height 2 3/4" outside, 2 1/4" inside  
Width 3" outside, 2" inside  
OD 3/16" hole



Hood Spike Grommet # **HM75-65424**  
Height 3 9/16" outside, 1 7/8" inside  
Width 2 3/8" outside, 1 1/8" inside



Hood Mount Bushing # **HM75-66154**  
Small OD 1 3/16"  
Large OD 1 3/4"  
Misc. Thickness 7/16", accepts 1/2" diameter bolt

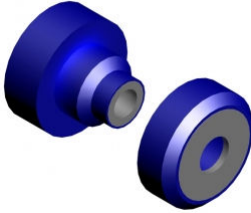


Motor Mount # **MM75-62370**

Large OD 2 9/16"

Misc. Sleeve ID 3/4", Washer ID 3/4"

Kit Components – (1) Upper Mount, (1) Lower Mount, (1) Inner Sleeve



Motor Mount # **MM75-62372**

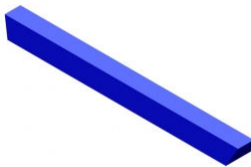
Length 2 9/16"

Small OD 1 1/2"

Large OD 2 9/16"

Misc. Sleeve ID 5/8", Washer ID 3/4"

Kit Components – (1) Upper Mount, (1) Lower Mount



Motor Mount # **MM75-62748**

Length 8 1/8"

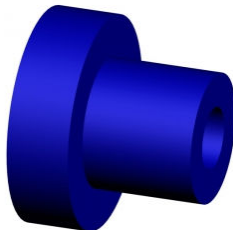
Height 9/16"

Width 7/8"



Low Air Leaf Bushing Kit # **PB75-29101**

Kit Components – (2) PL1076, (20) PL1189, (2) Compression Washers, (1) Bolt, (1) Locknut, (1) Spacer Sleeve



Cab / Motor Mount # **PL1009**

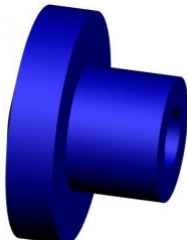
Length 2 7/16"

ID 5/8"

Small OD 1 13/16"

Large OD 3"

Alt # M17417, K066.176



Motor Mount # **PL1013**

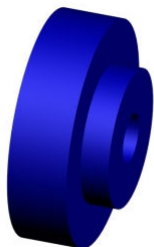
Length 2 5/8"

ID 13/16"

Small OD 2 1/16"

Large OD 3 3/4"

Alt # K066.229, EM12, G11613, M17406



Radiator/Motor Mount # **PL1015**

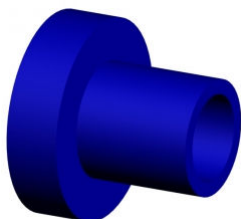
Length 1 3/16"

ID 5/8"

Small OD 1 13/16"

Large OD 3"

Alt # K066.228, PD3401



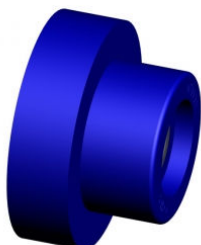
Motor Mount # **PL1018**

Length 2 3/8"

ID 13/16"

Small OD 1 5/8"

Large OD 2 3/4"



Cab Mount # **PL1070**

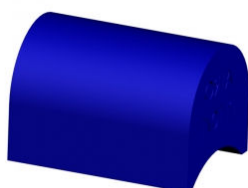
Length 1 13/16"

ID 12/16"

Small OD 2"

Large OD 3"

Alt # G11707



Hood Hinge Bushing # **PL1071**

Height 1 1/4"

Width 1 3/8"

Length 1 13/16"

Alt # M13318



Hood Pin # **PL1072**

Length 6 1/2"

OD 2 1/2"

Misc. Thread 5/8" -18



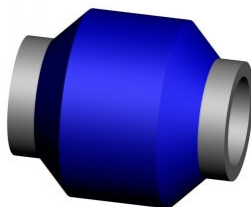
Equalizer Bushing # **PL1073**

Length 2 1/4"

ID 2 1/2"

Small OD 3 1/8"

Large OD 4"



Hood Hinge Bushing # **PL1074**

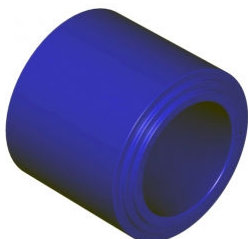
Length 1 3/8"

ID 11/16"

Small OD 3 1/8"

Large OD 1 1/4"

Alt # M17474UB



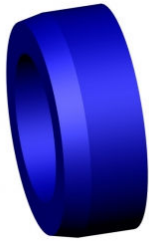
Air Leaf Bushing # **PL1075**

Length 2 5/16"

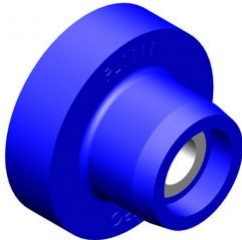
ID 1 3/4"

OD 2 1/2"

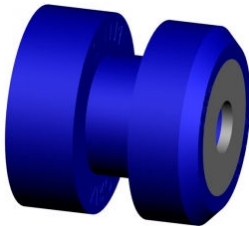
Alt # 30.2001



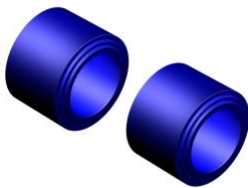
Beam End Washer# **PL1076**  
Length 1 1/4"  
ID 1 3/4"  
OD 2 5/8"



Motor Mount# **PL1111**  
Length 2 7/16"  
ID 13/16"  
Small OD 2 1/8"  
Large OD 3 5/8"

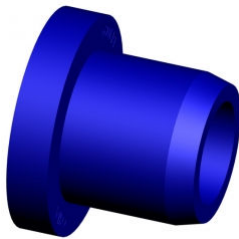


Motor Mount# **PL1112**  
Length 2 1/2"  
ID 3/4"  
Large OD 2 9/16"



Spring Eye Bushing (set of 2) # **PL1189**  
Length 1 15/16"  
ID 1 3/4"  
OD 2 1/2"

# VOLVO



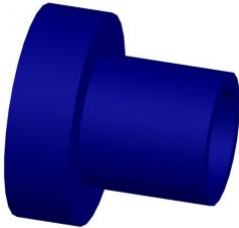
Motor Mount# **PL1086**

Length 2 5/8"

ID 11/16"

Small OD 2 1/4"

Large OD 3 1/4"



Motor Mount# **PL1088**

Length 3 3/16"

ID 5/8"

Small OD 1 1/2"

Large OD 2 3/8"



Font Motor Mount # **G12304**

Thickness 2 1/16"

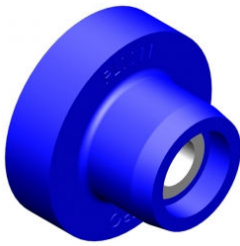
Width 3 1/2"

c-c 10"

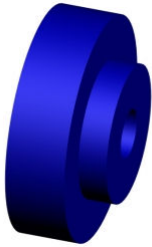
Bolt Holes 13/16"



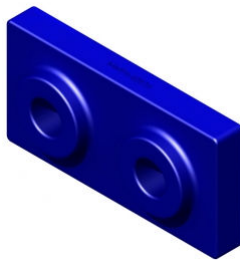
# WESTERN STAR



Motor Mount# **PD870**  
 Length 2 7/16"  
 ID 13/16"  
 Small OD 2 1/8"  
 Large OD 3 5/8"  
 Alt # PL1111



Radiator/Lower Motor Mount# **PD3401**  
 Height 3/4"  
 Width 3"  
 Length 1 3/16"  
 ID 5/8"  
 Small OD 1 13/16"  
 Large OD 3"  
 Alt # G12301, PL1015  
 Fits Western Star, Kenworth, Freightliner  
 Upper Motor Mount# **PD3402**  
 Length 6"  
 ID 5/8"  
 OD 1 7/8"(nipple)  
 Alt # PL1115  
 Fits Western Star, Kenworth, Freightliner



Hood Isolator Mount# **M203103UB**  
 Length 3"  
 Height 1.9"  
 Width 2.5"  
 Bolt OD 3/8" – 24, c-c 1.5"

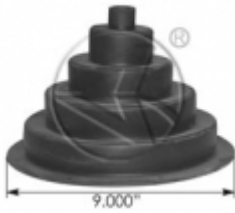


Bonnet Insulator Bush # **PD950**



Motor Mount Kit (Front) - # **MM46-62002**  
 ID 3/4"  
 Misc. Bolt Hole 4" c-c  
 Kit Components – (1) MM46-62651 Upper Mount, (1) MM46-62451 Lower Mount  
 Alt # G11074, (M17403/M17413)(rubber)  
 Suits Ford, Freightliner, Western Star

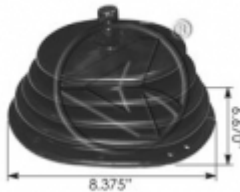
# GEAR LEVER BOOTS



KW Round Gear Lever Boot # **29704**  
OD 9"  
Alt # 562.7591



KW Round Gear Lever Boot # **29701**  
OD 7.125"  
Alt # 562.7593



IHC Gear Lever Boot # **29702**  
Length 8.375"  
Width 6.67"  
Alt # 562.7551



17" Vinyl Shift Boot # **91001**



## Rocklea Truck Spares

113 Boniface street, Archerfield, Qld, 4108  
Phone: (07) 3277 0966